

Update and Automate:

# PPG MoonWalk® Software Update 2.2.1 Now Available



**A major software update is available for our revolutionary PPG MOONWALK® paint mixing machine.**

This update – which is free for existing users – will be downloaded automatically and offers a variety of new features in addition to the core efficiency, environmental, and cost-saving benefits of the PPG *MoonWalk* system.

## PPG *MoonWalk* software – what's new?

The PPG *MoonWalk* software update 2.0 introduces new features that not only benefit existing users of the system but give prospective customers more reason to invest.

## Integration

### Improved integration with the PPG LINQ™ digital ecosystem

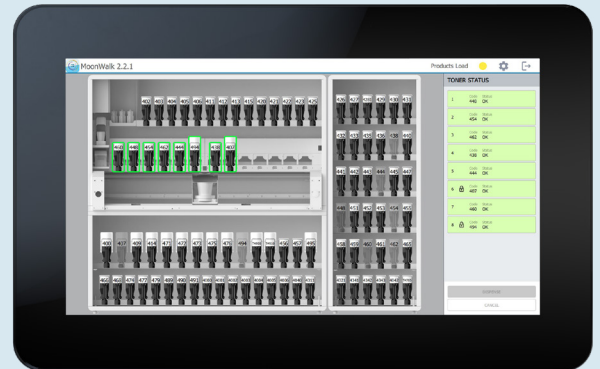
This update reinforces PPG MOONWALK® as a key component of the PPG LINQ system, which is particularly useful for body shops that have adopted the entire digital ecosystem.

### Compatibility with PPG LINQ Color software

PPG MoonWalk is now compatible with PPG LINQ Color software, which means users are no longer tied to PAINTMANAGER® XI for color retrieval.

### New graphics align with those of PPG LINQ digital tools

Updated system graphics bring PPG MoonWalk in line with PPG LINQ hardware and software tools, improving consistency and familiarity.



The layout for the MoonWalk US version is now available

## Performance

### Stronger, more stable connection

The software update ensures a strong connection between the PPG MoonWalk unit and color retrieval software (either PaintManager XI or PPG LINQ Color), preventing loss of communication.

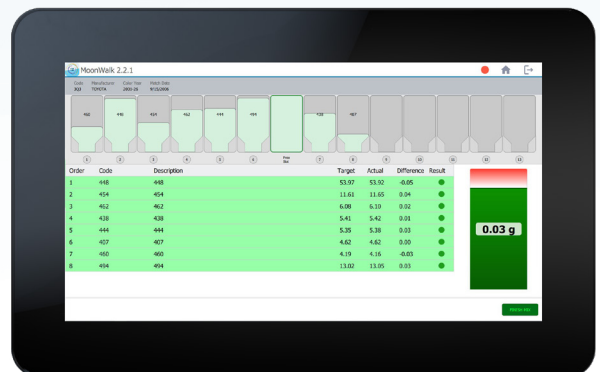
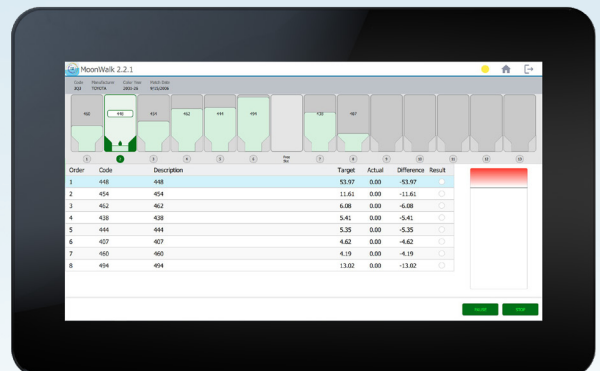
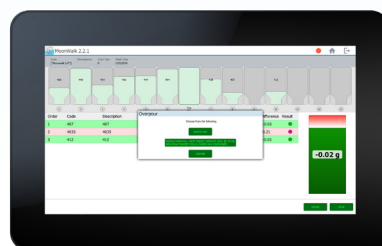
### New dispensing screen

A new dispensing screen offers improved insight into the mixing process, allowing technicians to access more information about the status of a mix in progress.

This includes:

- Real-time status of the mix
- More responsive process bar
- Full visualization of the rack and product during dispensing
- Quantity of product remaining
- Tolerance visualization
- Color information

Recalculation functionality is now embedded into the PPG MoonWalk software, reducing the time needed to complete the formula due to errors from manually pouring.



New dispensing screen

## Workflow and Efficiency

### Customized dispensing and bottle management

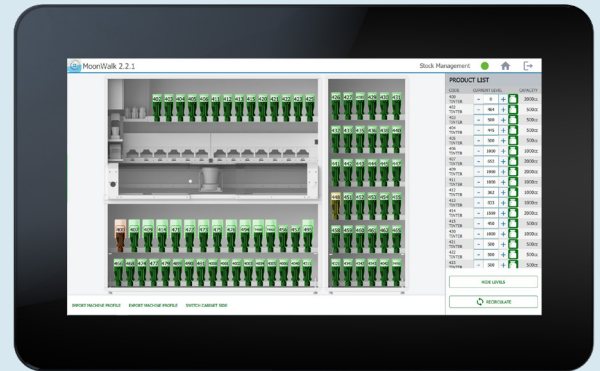
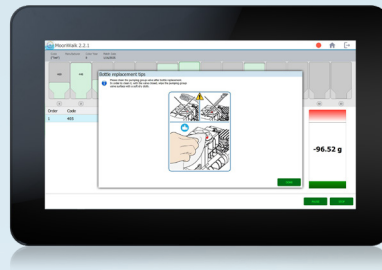
New settings allow users to organize dispensing in a way that suits their workflow. Current methods are still available.

- Dispense according to formula order
- Rack order (L-R or R-L) for time savings
- Largest quantities first

Control at which point bottles are replaced after all product has been consumed. This can boost efficiency and allow better time allocation:

- No setting (bottles are dispensed according to the programmed order)
- Dispense near-empty bottles at the beginning
- Dispense near-empty bottles at the end of the process

The new guideline will help users to properly complete the paint bottle change.

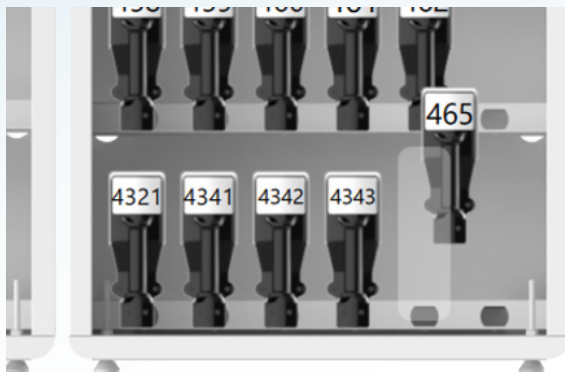


New stock management screen

### Additional stock management functions

The stock management screen has been updated for greater efficiency and ease of use. New functions make it possible to:

- Easily import or export the machine profile
- Drag and drop tinters to rearrange stock positioning
- View list of LUT toners
- Switch the side cabinet at the touch of a button
- Adjust the remaining quantity for all the products loaded on PPG MoonWalk.



Drag and drop the tinters to rearrange the stock positioning

CODE	CURRENT LEVEL	CAPACITY
400 TINTER	- 0 +	2000cc
402 TINTER	- 484 +	500cc
403 TINTER	- 500 +	500cc
404 TINTER	- 445 +	500cc
405 TINTER	- 500 +	500cc
406 TINTER	- 1000 +	1000cc
407 TINTER	- 652 +	2000cc
409 TINTER	- 1990 +	2000cc
411 TINTER	- 1000 +	1000cc
412 TINTER	- 362 +	1000cc
413 TINTER	- 833 +	1000cc
414 TINTER	- 1599 +	2000cc
415 TINTER	- 450 +	500cc
420 TINTER	- 1000 +	1000cc

View list of LUT toners

Dispensing strategy

Rack order

Rack order
Formula order
Largest quantities first

Right to left (13...1)

Empty bottles management:

Empty bottles while dispensing and stop the machine to replace them

☐ Check toner during dispensing

Setting the dispensation order

**PPG is more than paint.** Our revolutionary, industry-leading connectivity platform has been exclusively designed to completely transform customer experience, partner relationships and internal body shop operations.

[ppgrefinish.com](http://ppgrefinish.com)

The PPG Logo, PPG LINQ, PPG MoonWalk and PaintManager are registered trademarks and PPG LINQ is a trademark of PPG Industries Ohio, Inc. © 2025 PPG Industries, Inc. All rights reserved.